

SOUTH EAST MARTS SALES NEWS



Auctioneers

HAILSHAM'S HEADLINES



Auctioneers

Taking Entries Now
for our Farm Sales in July

Hye House Farm

Crowhurst, Near Battle

Manor Farm

Heyshott, Near Midhurst

THURSDAY 29TH JUNE 2023

HAILSHAM MARKET

Market Street, HAILSHAM, Sussex. BN27 2AG

Tel:- 01323 844874

Mobile:- 07890 359622

Roger Waters' Mobile 07860 663345 (Home 01273 832360)

e-mail address ~ info@southeastmarts.co.uk

visit our web site ~ www.southeastmarts.co.uk

FARM DIRECT

TEL: RRW 07860 663345 or 01323 844874

BULL BANK & BEEF BREEDING STOCK

Two Aberdeen Angus bulls
2 years plus
Ready for work

Young Pedigree Sussex bull
25 & 36 months
Good temperament, exceptional fertility results
TB4 parish

Small spring calving, homebred, purebred, polled Sussex Herd
Twelve cows with ten calves at foot
Running back to Purebred Sussex bull from 3rd May
TB1 parish

HAY/ STRAW DIRECT

West Sussex
Large quantity of
Big bale Wheat & Barley Straw
also '22 Round bale meadow Hay
East Sussex

Available soon Lewes area
Big bale winter barley straw & winter wheat straw to follow
Out the field or can deliver

MACHINERY

John Deere 550 round baler
String tie
Offers invited
Tel 07790 273805

NEXT SALE OF STORE CATTLE

Wednesday 5th July 2023

Entries include:

1 purebred Aberdeen Angus cow with calf at foot and
6 Aberdeen Angus steers & heifers from **Jamie's Farm**

1 Hereford x cow PD to Hereford bull, due September and **3** Hereford
steers & heifers from **MJ & ML McCubbine**

25 Aberdeen Angus & British Blue steers & heifers, 8/9 months
from **J Ford**

8 Sussex x, Fleckvieh x, Aberdeen Angus x steers & heifers, 16 months
from **RJ Cyster & Son**

16 Limousin & Beef Shorthorn steers & heifers, 16/ 25 months
from **RC Baker & Co**

Early Breeders & Rare Breed Sale



**of Sheep, Cattle, Pigs & Goats
Incl. Southdown Sheep Sale**



SATURDAY 29TH JULY 2023

Entry forms available online or in the Market Office
www.southeastmarts.co.uk

Closing date for entries Friday 14th July 2023

SUSSEX STEEL CONSTRUCTION

DANIEL HUNTER-EVANS
MOB: 07951 438793
EMAIL: DANIEL@SUSSEXSTEELCONSTRUCTION.CO.UK



**AGRICULTURAL & INDUSTRIAL
BUILDINGS, REPAIRS & RENOVATIONS**

The Friends of Brooklands School Charity Auction at the Osney Lodge Collective Sale on Saturday 24th June 2023

We would like to extend a heartfelt thank you to all that helped make our auction entry a huge success!

The Bell, Outwood, The Barley Mow, Tandridge, The Plough, Dormansland.
The continuity of support shown from you and the local residents is overwhelming!
Lastly, the people on the day who have helped to make this event so special and have given their time and hard earned cash to this worthy cause. Because of you we are able to continue on our mission to provide all the necessary equipment for our children to flourish.

Special thank you to Roger! Outstanding effort! Thank you for being someone we can always rely on.

FCN | THE FARMING
COMMUNITY
NETWORK

If you need to talk, we're here to listen.

Call 03000 111 999
Email help@fcn.org.uk

Helpline is open 7am - 11pm every day of the year.

YARN IN A BARN

LIFE AFTER BPS - PART 2

**COME AND JOIN US FOR A BBQ AND SEE HOW A
SMALL TENANTED FAMILY FARM IS ADAPTING TO CHANGE**



**Tuesday
4th July
Arrive
5.30pm for
6pm start**

**Mote Farm,
Mote Road,
Ivy Hatch,
Sevenoaks,
TN15 0NT**

**Please contact Debbie in advance
for catering purposes:**

Debbie Broad: 07710 495238 / motefarm@yahoo.com

HAILSHAM MARKET - PRIMESTOCK DAY

PRIME STOCK – WEDNESDAY 28TH JUNE

PRIME CATTLE (5) *Auctioneer: Roger Waters*

Short numbers. J H & M J Pitts support with their purebred Sussex steers selling to 268p per kilo and grossing £1594.60 per head. Lincoln Red x to 252p per kilo and grossing £1474.20 per head. Overage crossbred Sussex heifer sells at 195p per kilo.

STORE CATTLE (11) *Auctioneer: Roger Waters*

Matthew Beach's small consignment of dairy bred store cattle sell to £500 per head. *Catalogued sale of store cattle next Wednesday 5th July.*

CALVES (0) *Auctioneer: Roger Waters*

No calves on offer this week.

PIGS (0) *Auctioneer: Alex Moss*

No pigs on offer this week.



Auctioneers

PART TIME MATERNITY COVER POSITION AVAILABLE AT HAILSHAM MARKET



Auctioneers

The position involves general secretarial and office duties. A good level of computer skills is required and some knowledge of livestock farming is preferred. Some clerical work will be required both inside the market office and outside on sale days, including farm sales, usually held on a Saturday.

To start beginning of July and potential for further part time work after maternity cover for the right candidate. Salary according to experience.

Please apply in writing to Roger Waters, South East Marts, Hailsham Market,
Hailsham, BN27 2AG
or email info@southeastmarts.co.uk

Collie puppies

2 males - ready to go
From working parents
Please call 07828 148101

Collie x Kelpie puppies

Good working parents
Approx 6 weeks old
East Sussex
07580 195510

HAILSHAM MARKET - PRIMESTOCK DAY

SHEEP – 556

A short entry due to haymaking and a lesser trade as the sale fell on the same day as the Festival of Eid. Sotheby's sells a modern picture for £85 million. The UK bank rate is 5% (3.2% in the Euro zone). Violence has erupted in the major cities in France and Madonna is in hospital.

MILK LAMBS (341) Auctioneer: Nick Young Overall average 266.6p

Quality and weight are key to achieving the best possible price. Store lambs must be creep fed to achieve their true price potential. Top price to **M Kerven** of Reigate at **£165**. Runner up **Simon Feakes £148; M Kerven £148**.

Leading prices: M Kerven £165, £148, S D & J J Feakes £148, £134, Holly Beale £147, C Bull £145, Holly Arpino £138

Leading prices per kilo: Holly Beale 338p, S D & J J Feakes 314p, 305p, M Kerven 300p, F S Major & Sons 295p (twice), 290p, Holly Arpino 290p

PRIME HOGGETS (90) Auctioneer: Nick Young Overall average 260.6p

Top call **Quinton Poulton £144**, closely attended by the **Sompting Settlement at £127** (three times); **Messrs. Bishop £125**. Price per kilo completely dominated by the **Sompting Settlement**.

Leading prices: Q Poulton £144, The Sompting Settlement £127 (thrice), SC & RJ Bishop £125 (twice), £124, Wooladon Farms Ltd £125, M Kerven £120, M Miller £118

Leading prices per kilo: The Sompting Settlement 265p, 261p, 256p, 254p, 252p, Q Poulton 242p, SC & RJ Bishop 236p, 218p, 209p, R & P Marks 225p

CULL EWES & RAMS (58) Auctioneer: Nick Young

A good level of demand for the very short entry. Top call to Hailsham's own, **Rosie Russell at £128; Wooladon Farms £120; Matthew Miller £110**. We want your ewes at Hailsham. Please let us know exactly what you have.

Leading prices: R Russell £128, Wooladon Farms Ltd £120, M Miller £110, M Price £108, R & P Marks £100 (thrice), M K Wickens £100, C Boyling £100, D Powell £96

COUPLES (73) Auctioneer: Nick Young

Ken Brundle's quality offering shines brightly at **£190** per couple. Many more of this quality are wanted.

If you have sheep to sell, whatever the number, whatever the breed, whatever the quality, Hailsham will undoubtedly make the best price for you. For marketing advice from the fieldsmen please call 01323 844874 or the mobile 07890 359622 today.

We want your sheep at Hailsham!

Job opening for Passmore Coombes

Large Downland mixed family farm in West Sussex looking for a full time farm worker. Job includes arable, cattle, sheep and farm maintenance work. The right candidate would be involved with all aspects of the farm but their main responsibilities would be the arable and machinery work. They must be able to work with a young, energetic and enthusiastic team.

5 days/week plus some weekends especially during busy periods.

New 3 bedroom semi detached house with large garden available.

Full clean driving licence required.

Please send CVs with references to Andrew Flake at farm@coombes.co.uk

R.Popovic & Son

Agricultural Contractors Est.1966

Complete round baling service from field to stack

New McHale High density belt balers with choppers

Forage harvesting, muck carting & spreading

Cultivations, heavy rolling, grass seeding etc.

Flail & rotary grass & scrub cutting

All other associated work undertaken

Call Nick Popovic

on 01323 832002 or 07889 177434

SHEAR BLISS



ED GINGELL

07986 283867



J. HOBDEN AGRI

GET IN TOUCH FOR SHEEP SHEARING, ANY SIZE FLOCK.

LIVESTOCK – FENCING – AGRICULTURAL CONTRACTING

TEL: 07786 186 226

Hye House Farm, Crowhurst

Near Battle, East Sussex

Including:

TWENTY TRACTORS -

CLASSIC, COLLECTABLE AND COMMERCIAL

JCB 530 Farm Special '70 telehandler, 1942 John Deere AR
two cylinder, N Reg Case 5130,

1949 Fordson Standard Petrol/TVO, two Fordson Power
Majors, Fordson Super Major, early '50 Fordson Major, '49
Fordson Major, Panther Mark 2 Major, Ford 6610,
J Reg MF 399, '68 MF 135, MF 65, Ferg TEF, Ferg 35,
Int 523, Same Leopard 90 etc



Eighteen grain, tipping & bale trailers, Ifor Williams
livestock trailer, **Yanmar B7 digger**, NH Clayson M122 combine,
Two RP200 balers, Taarup 3024 mower, Zagu rake, Niemeyer
HR451 tedder, Wessex topper, Ritchie pasture splitter, Versa cherry
picker, Tomahawk 4040 shredder, DP7B 4f plough, rollers,
drill, power & disc harrow, MF potato harvester, riddle & spinner,
livestock equipment, McConnell PA8 ditcher and PA93
hedgecutter, many tractor parts circa 1950/1970
& livestock equipment

Plus other vintage and commercial equipment!

On Saturday 15th July 2023

on behalf of F Ashby retiring



Also included:

'62 Fordson Super Major, Nuffield 4/25, David Brown 880,
New Holland TCE40 only 872 hours, two Ifor Williams
livestock trailers, twin and tri axle, Ifor Williams plant trailer,
Holmes dung spreader etc etc

Do not miss this sale!

On-line bidding available with  **MartEye**



R & A Ellett

Dipping Contractors

We provide a mobile dipping service
with purpose built equipment.

Contact Robert:- 07462 474884 or Aimee:- 07765 007503

Hillside Farm, Magreed Lane, Broad Oak, Heathfield, East Sussex, TN21 8TR

K&T
FOOTWEAR



07715 035 131

www.dealerboots.co.uk

LEADING
FOOTWEAR
SUPPLIERS
EST. 1962.



info@kandtfootwear.co.uk



www.kandtfootwear.co.uk



East Sussex Farmers' Benevolent Fund

Registered Charity number 271188



The Benevolent Fund was started in 1935 by a local farmer and its purpose is to support and help farmers and their dependents and those involved in the wider land based industries and their dependents. The fund is overseen by five trustees who are either local farmers or have a lifetime experience in the agricultural industries.

Assistance can vary and includes one-off grants, business support, and longer term support for those who might be unable to work due to illness or disability. The fund can also assist those entering land-based education and can contribute to the finance of relevant CPD in order to further land-based careers. If you feel that we can help or you are aware of someone who might benefit from support then please contact the Honorary Secretary of the Benevolent Fund:

Des Lambert on (07912) 464746 or (01273) 890841

GRAHAM LONG
STEEL CONSTRUCTION LTD
FOR ALL YOUR AGRICULTURAL BUILDING NEEDS



TEL: 01435 865370 MOB: 07795 226296
graham@glsconstruction.co.uk

HOLTRACTORS LTD

Hailsham ♦ Sussex

info@holtractors.co.uk Mobile 07850851941 After Hours 01323 840077 www.holtractors.co.uk

2019(69)JD 6130R c/w 643 loader, 600 Michelin tyres, 80hrs.

2019 NH T7-210 CVT g/box, 70hrs, F/linkage and PTO, Radar, GPS fully loaded .

2019 NH T7-245 Range command, 190hrs F/linkage and PTO.

2019 NHT5-105 c/w MX 406 Loader 67hrs

2015 JD 6125R 3750hrs Loader ready, H340 Loader available if required 95% good tyres

2019 (69) JD130R 196Hrs, Loader ready

30+ Tractors Ford - NH - MF - JD- IH - Case- Iseki -JCB

Hydro 3050 Pivot steer[Brand New] Loading shovel.

2019 Spearhead 460 Multi -Cut with Mulching kit as new

Big Balers: Vicor - Welger - MF - Heston - Krone

Conventional Balers: Welger - NH - JD - IH - Claas - Heston - Galignani-Bamford - Deutz-Fahr

20+ Mowers in stock. Lely-Pottinger-Vicon- Kverneland-Taarup-JD- MF-IH-Ransome-Deutz-Fahr -Tallis

30+ Tedders-Turners-Rakes

15+ Hay Grabs - Accumulators -Transporters

30+ Trailers 3ton-30ton Ag- Commercial- Construction-Dump-Hay - GP - Grain- Silage

30+ Toppers - Flail Mowers, etc.

30+ Trailers Livestock- Horsebox - Dual Purpose - Plant - GP-Tippers

15+ Ploughs

50+ Discs - Cultivators- Drills

10+ 360o Excavators - Dumpers - Volvo - JCB - Hyundai - Hitachi - Benford - Thwaites

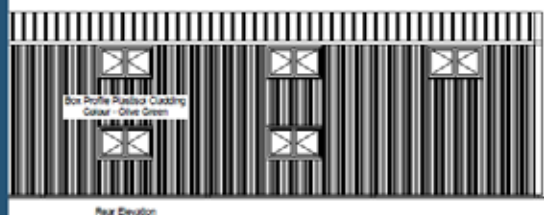
500+ items in stock. Please look at our website for full descriptions and photos



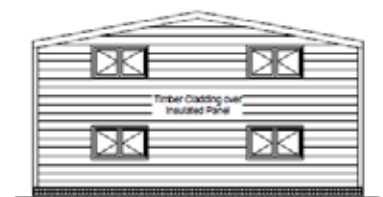
We offer a fixed price
28 day Agricultural Prior
Notification Application
including:

- Ordnance Survey Mapping
- Design Drawings
- Application
- Local Council Fees

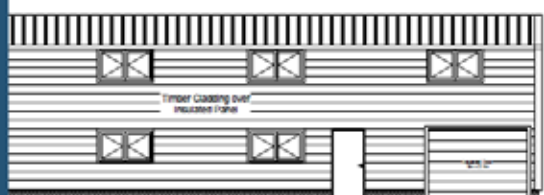
Planning | Project Management Procurement Services



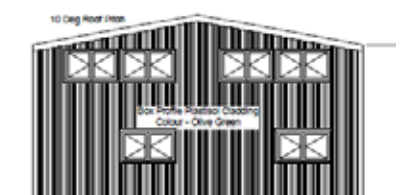
Rear Elevation



Left Elevation



Front Elevation



Right Elevation

For more information or to arrange a site visit call or email:
Nick@nfieldprojects.co.uk | 07738 703498



CLEAR, RELEVANT & PROFESSIONAL ADVICE WHEN YOU NEED IT

Nick Young FRICS

01435 865077

e-mail: nickyoung@watsonsestates.co.uk


Farm insurance, the way it should be

We're a family-run business and pride ourselves on forging long term relationships with our farming and agricultural clients. Covering the South East, South West and Midlands, we deliver an extensive range of farm, agri business and equine policies tailored to you.

www.county-insurance.co.uk/farms

Farm & Equine **01865 844985**

General **01865 842084**

 Follow us **@County_Farm**

